



NSW QUARTERLY REGIONAL LABOUR MARKET REPORT: OCTOBER 2010

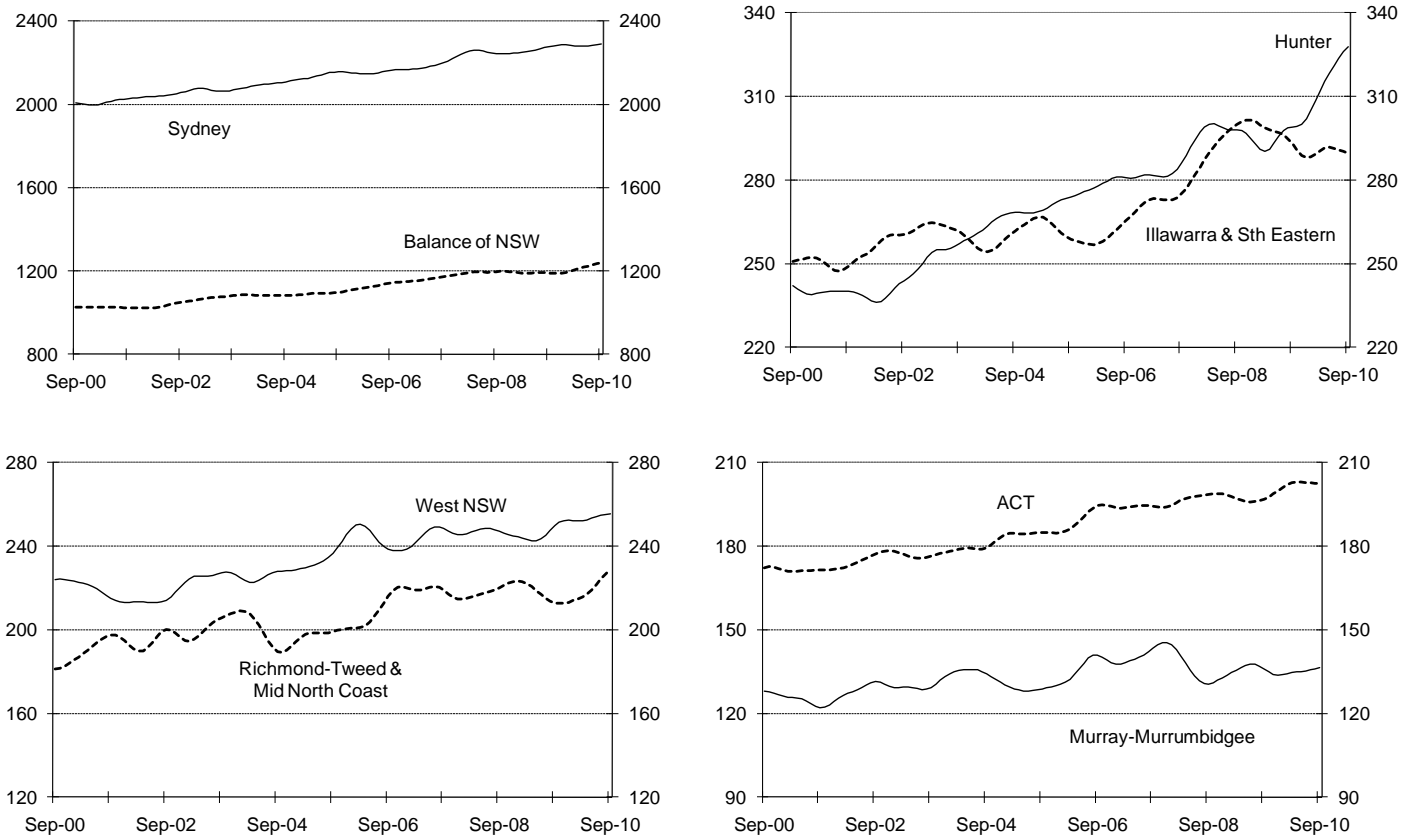
Summary

- *Employment* rose by 1.4 per cent in Sydney, 4.1 per cent in the balance of NSW and 3.0 per cent in the ACT over the year to the September 2010 quarter. Of the non-Sydney regions, employment grew over the year in the Hunter, Illawarra & South Eastern, Richmond-Tweed & Mid-North Coast and West NSW.
- *Unemployment* fell by 19 per cent in Sydney and by 12 per cent in the ACT and rose by 11 per cent in the balance of NSW over the year to the September 2010 quarter. Of the non-Sydney regions, unemployment was lower over the year in the Hunter and Illawarra & South Eastern.
- *Labour force participation* was higher over the year to the September quarter in most regions but lower in Illawarra & South Eastern and West NSW.
- The average number of job seeker allowees in the year ended September 2010 was lower by one per cent in Sydney, nine per cent in the rest of NSW and eight per cent in the ACT. All regions recorded an annual decline in job seeker allowees with the largest proportional falls being in South Eastern and Central & Far West.
- *Residential building approvals* increased by 43 per cent in Sydney and by 37 per cent in the balance of NSW in the year to August 2010. Annual approvals rose in all of the regions (except Murray) with Wollongong and the Central Coast recording the largest proportional increases. The value of non-residential building approvals in the year to August fell by 16 per cent in Sydney and by 26 per cent in the rest of NSW. This followed a considerable boost to approvals in the second half of 2009 by the Australian Government's Building the Education Revolution initiative.
- *Guest nights of accommodation* rose by 5.6 per cent in Sydney in the year to the June quarter 2010 and by 0.8 per cent in the rest of NSW. Guest nights rose in just over half of the tourist regions with strong growth in the Hunter, The Living Outback and Capital Country.
- *Major projects* recently completed include the \$120 million Bluetongue Brewery at Warnervale (near Wyong) and the Moolarben Coal Mine at Ulan (near Mudgee) which will employ 320 workers when it reaches full output. Bunnings plans to open 15 new warehouses and three additional stores in NSW over the next three years, supporting about 3,900 construction jobs and 2,700 retail jobs. The NSW Government has approved a \$700 million wind farm near Nimmitabel (south of Cooma) while the Australian Government is investing \$565 million in the rail infrastructure of far western NSW.

Employment

Trend employment is falling in Illawarra and South Eastern and is broadly flat in the ACT and rising in the other NSW regions in the charts below. West NSW comprises the ABS regions of Northern, Far West, North Western and Central West.

Employment (000s)



Source: ABS Labour Force Survey. Data has been trended by DEEWR (except for the ACT).
Trend data for recent months can be subject to considerable revision.

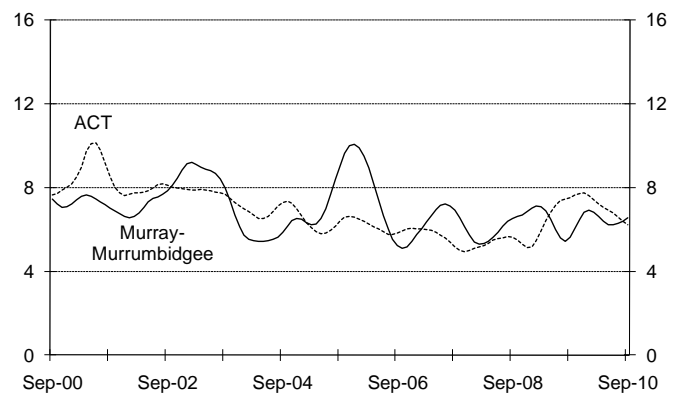
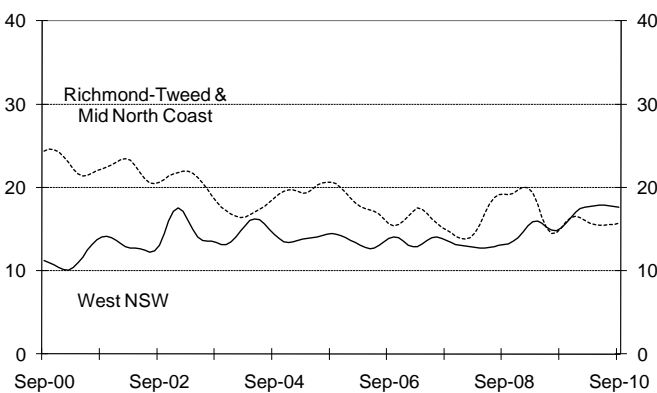
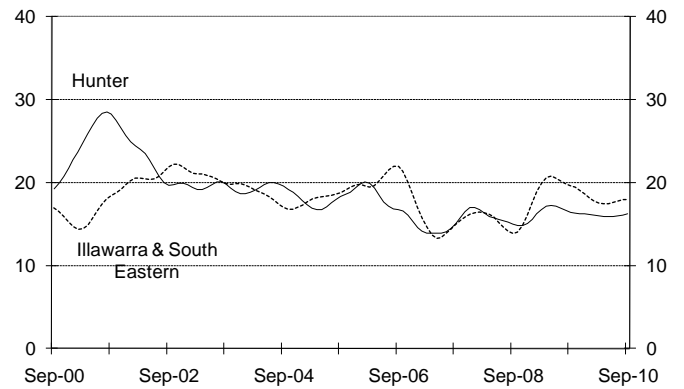
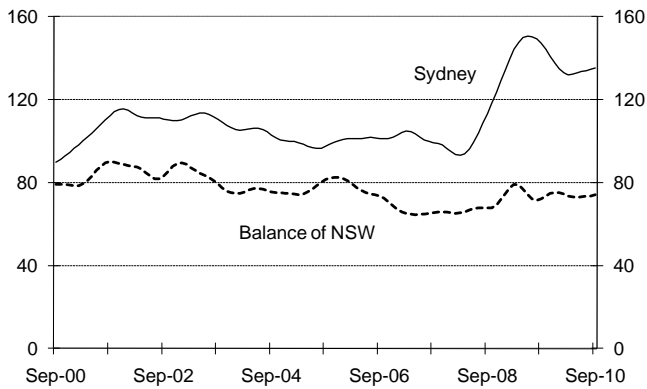
Compared to the same quarter in 2009, *average non-trend* employment in the September quarter was higher by 1.4 per cent in Sydney, by 4.1 per cent in the balance of NSW and by 3.0 per cent in the ACT (see table on page four). Of the non-Sydney regions, employment grew over the year in the Hunter, Illawarra & South Eastern, Richmond-Tweed & Mid-North Coast and West NSW.

Unemployment

Trend unemployment is falling in West NSW and the ACT, is broadly flat in Richmond-Tweed & Mid-North Coast and rising in the remaining NSW regions depicted in the charts below.

Compared to the corresponding quarter in 2009, *average non-trend* unemployment in the September quarter was lower by 19 per cent in Sydney, higher by 11 per cent in the balance of NSW, and lower by 12 per cent in the ACT (see table on page four). Of the non-Sydney regions, unemployment was lower over the year in the Hunter and Illawarra & South Eastern.

Unemployment (000s)



Source: ABS Labour Force Survey. Data has been trended by DEEWR (except for the ACT).
Trend data for recent months can be subject to considerable revision.

Labour force participation

Labour force participation in the September quarter 2010 was lower compared to the same quarter in the previous year in Sydney and higher in the balance of NSW and the ACT (see table on page four).

Amongst the major non-Sydney regions, labour force participation was higher over the year to the September quarter in the Hunter, Richmond-Tweed & Mid North Coast and Murray-Murrumbidgee and lower in Illawarra & South Eastern and West NSW.

Table 2
Regional Labour Force Data September Quarter 2010

Original (non-seasonally adjusted) figures in quarterly averages. Minor inconsistencies due to rounding of estimates.

REGION	EMPLOYMENT (000s)			UNEMPLOYMENT (000s)			UE RATE		PARTICIPATION	
	Same Qtr	Current	Change	Same Qtr	Current	Change	Same Qtr	Current	Same Qtr	Current
	Last Year	Quarter		Last Year	Quarter		Last Year	Quarter	Last Year	Quarter
NSW	3468.0	3549.1	81.2	204.9	184.6	-20.3	5.6%	4.9%	63.5%	63.4%
SYDNEY	2272.8	2304.4	31.6	142.4	114.9	-27.5	5.9%	4.7%	66.2%	65.1%
Inner Sydney and Inner Western Sydney	309.8	318.1	8.3	19.8	13.2	-6.7	6.0%	4.0%	70.7%	69.8%
Inner Sydney	217.3	219.9	2.5	14.1	8.6	-5.5	6.1%	3.8%	74.6%	72.4%
Eastern Suburbs	149.2	144.2	-5.0	6.4	2.9	-3.4	4.1%	2.0%	70.8%	65.7%
St George-Sutherland	249.2	243.2	-6.0	10.2	11.6	1.5	3.9%	4.6%	68.4%	66.0%
Canterbury-Bankstown	137.4	133.7	-3.7	10.8	10.1	-0.7	7.3%	7.0%	56.8%	54.1%
Fairfield-Liverpool and Outer South Western Sydney	275.3	287.2	11.9	28.0	17.4	-10.6	9.2%	5.7%	62.7%	61.8%
Fairfield-Liverpool	156.9	155.0	-2.0	16.6	11.5	-5.1	9.6%	6.9%	59.7%	56.1%
Central Western Sydney	148.6	154.7	6.2	13.5	13.0	-0.6	8.3%	7.7%	60.4%	61.3%
North Western Sydney	313.9	321.0	7.1	21.8	21.7	-0.1	6.5%	6.3%	69.4%	69.5%
Lower Northern Sydney	185.5	178.9	-6.5	5.0	6.9	1.9	2.6%	3.7%	70.7%	67.7%
Central Northern Sydney	233.9	239.5	5.6	10.7	5.5	-5.2	4.4%	2.2%	68.1%	67.0%
Northern Beaches	135.9	140.3	4.3	7.5	5.0	-2.4	5.2%	3.5%	71.1%	70.8%
Gosford-Wyong	134.1	143.5	9.5	8.7	7.6	-1.2	6.1%	5.0%	55.5%	57.6%
BALANCE OF NSW	1195.2	1244.7	49.6	62.5	69.7	7.2	5.0%	5.3%	58.9%	60.4%
Hunter	298.6	325.9	27.3	15.0	13.7	-1.2	4.8%	4.0%	60.0%	63.7%
Newcastle	247.0	274.2	27.1	12.0	12.9	0.8	4.6%	4.5%	59.0%	64.2%
Illawarra and South Eastern NSW	298.0	300.2	2.2	17.7	17.4	-0.3	5.6%	5.5%	59.9%	59.2%
Illawarra	180.7	190.7	10.0	11.4	13.5	2.1	6.0%	6.6%	54.6%	57.0%
Wollongong	121.0	127.3	6.3	9.5	9.1	-0.4	7.3%	6.6%	55.4%	56.8%
Richmond-Tweed and Mid-North Coast	211.5	227.5	15.9	11.6	14.9	3.3	5.2%	6.1%	49.6%	52.9%
Northern, Far West-North Western and Central West	251.3	255.7	4.3	13.1	13.7	0.5	5.0%	5.1%	64.1%	64.0%
Murray-Murrumbidgee	135.7	135.6	-0.2	5.1	10.0	4.8	3.6%	6.8%	63.3%	64.1%
ACT	197.5	203.4	5.9	6.7	5.9	-0.8	3.3%	2.8%	72.2%	72.6%
NSW and ACT	3665.4	3752.5	87.1	211.6	190.5	-21.1	5.5%	4.8%	63.9%	63.8%
AUSTRALIA	10953.3	11291.2	337.9	637.7	590.7	-46.9	5.5%	5.0%	65.2%	65.4%

Source: ABS Labour Force Survey. Data refers to residents. TAKE CARE: Data for small regions can be very imprecise and movements may be exaggerated.

Job seeker allowees

The average number of job seeker allowees in the year ended September 2010 was lower by one per cent in Sydney, nine per cent in the rest of NSW and eight per cent in the ACT. All regions recorded an annual decline in job seeker allowees with the largest proportional falls being in South Eastern and Central & Far West.

The average number of job seeker allowees was 6.2 per cent lower in the September 2010 quarter than in the June quarter in Sydney and 6.3 per cent lower in the rest of NSW. For the majority of regions, the percentage change in allowees between the September and June quarters was more favourable than was the case a year earlier. All regions recorded a decline in allowees in the September quarter with the largest proportional declines being in the Central Coast and Murrumbidgee regions.

Jobseekers Receiving Newstart Allowance and Youth Allowance (Other) Sep-10				
	Annual Avg.	% Annual Change	Quarterly Change*	
			Last Year	This Year
Sydney	63,594	-1%	4.3%	-6.2%
Central Coast	5,936	-12%	-4.5%	-9.3%
Hunter	11,758	-10%	1.3%	-6.7%
Newcastle	9,504	-9%	1.4%	-7.1%
Illawarra	8,183	-7%	1.0%	-7.2%
Wollongong	5,298	-5%	4.0%	-8.2%
Richmond-Tweed	6,514	-1%	0.3%	-7.9%
Mid-North Coast	8,114	-12%	-2.4%	-5.5%
Northern	4,434	-7%	-2.5%	-1.1%
North Western	3,225	-11%	-6.4%	-5.4%
Central & Far West	4,208	-14%	-5.5%	-5.9%
South Eastern	3,410	-17%	-8.0%	-6.3%
Murrumbidgee	2,572	-5%	2.2%	-8.4%
Murray	2,246	-10%	-1.7%	-7.2%
Non-Sydney (NSW)	54,663	-9%	-1.4%	-6.3%
NSW	118,257	-5%	1.6%	-6.2%
ACT	2,720	-8%	9.6%	-11.0%
NSW+ACT	120,977	-5%	1.8%	-6.3%
<i>Source: DEEWR "Labour Market and Related Payments - a monthly profile"</i>				
<i>* Not seasonally adjusted</i>				

Notes: The figures in the table above have been compiled from fortnightly averages published for Centrelink offices. They are only approximate because the postcode based Centrelink office boundaries do not always align with the boundaries of the ABS regions used here. The data cover those recipients of the Youth and Newstart Allowances who were not exempt (through incapacity, participation in training, voluntary work, etc) from job search requirements. Changes in numbers of allowees can reflect administrative and legislative changes (whose impact could differ between regions) as well as labour market trends. There is a break in series between June and July 2009. For Youth Allowance, from 1 July 2009 young people under 21 years of age without a Year 12 or equivalent qualification will usually need to participate in education and training full-time or participate in study or training, in combination with other approved activities, until they attain Year 12 or an equivalent Certificated Level 11 or above qualification.

Building approvals

Approvals for the construction of residential buildings increased by 43 per cent in Sydney and by 37 per cent in the rest of NSW in the year ended August 2010, boosted by the Australian Government and NSW Government expenditure on social housing. Annual approvals rose in all of the regions (except Murray) with Wollongong and the Central Coast recording the largest proportional increases. For the majority of the regions, the percentage change in approvals between the August and May quarters was less favourable than was the case a year earlier. Only three regions recorded a rise in the August quarter - Central Coast, South Eastern and Richmond-Tweed. (*Note: the data are not seasonally adjusted.*)

Number of Dwelling Units Approved: August 2010				
	Annual Level	% Annual Change	Quarterly Change*	
			Last Year	This Year
Sydney	20,131	43%	18%	-11%
Central Coast	1,231	67%	51%	65%
Hunter	3,864	60%	20%	-26%
Newcastle	3,272	60%	21%	-23%
Illawarra	1,938	40%	1%	-30%
Wollongong	1,067	91%	28%	-55%
Richmond-Tweed	1,163	48%	32%	21%
Mid-North Coast	1,677	32%	25%	-4%
Northern	1,064	48%	39%	-31%
North Western	366	6%	65%	0%
Central & Far West	983	25%	21%	-28%
Central West	969	28%	24%	-29%
South Eastern	1,154	42%	8%	48%
Murrumbidgee	739	12%	19%	-6%
Murray	604	-9%	14%	-21%
Non-Sydney	13,552	37%	20%	-14%
NSW	33,683	41%	19%	-12%
<i>Source: ABS Building Approvals</i>				
<i>* Not seasonally adjusted</i>				

The *value of non-residential building approvals* in NSW fell by 19 per cent in the year ended August 2010 with a decline of 16 per cent in Sydney and 26 per cent in the rest of NSW. Non-residential approvals were lower over the year in all regions except North Western and Northern. For all the regions, the change in the non-seasonally adjusted value of approvals in the six months ended August 2010 compared to the previous six months was less favourable than in the same period in the previous year. In the six months to August approvals fell in all regions except South Eastern. Non-residential building approvals in the second half of 2009 were boosted considerably by the Australian Government's Building the Education Revolution initiative. In the month of August 2009, approvals in the educational sector in NSW totalled \$2.4 billion. Care is needed in interpreting the data as the timing of approval of a major project can greatly impact on the figures for a region.

Value of Non-Residential Building Approved (\$000s): August 2010				
	Annual Value	% Annual Change	6 Monthly Change*	
			Last Year	This Year
Sydney	5,324,752	-16%	32%	-30%
Central Coast	190,700	-39%	64%	-33%
Hunter	592,383	-23%	195%	-40%
Newcastle	548,117	-17%	169%	-39%
Illawarra	334,532	-41%	222%	-52%
Wollongong	272,876	-24%	204%	-66%
Richmond-Tweed	142,431	-44%	378%	-51%
Mid-North Coast	245,873	-27%	105%	-37%
Northern	204,773	1%	114%	-50%
North Western	156,947	55%	357%	-42%
Central & Far West	125,990	-50%	83%	-47%
Central West	110,423	-53%	71%	-48%
South Eastern	171,254	-10%	306%	14%
Murrumbidgee	245,255	-4%	277%	-67%
Murray	95,008	-48%	48%	-68%
Non-Sydney	2,314,443	-26%	179%	-46%
NSW	7,639,194	-19%	66%	-35%
<i>Source: ABS Building Approvals</i>				
<i>* Not seasonally adjusted, not adjusted for inflation</i>				

Guest nights of accommodation

In the year ended June 2010, Sydney Tourist Region accounted for 51 per cent of guest nights in the NSW establishments surveyed. The annual change in guest nights was a rise of 5.6 per cent for Sydney and 0.8 per cent for the rest of NSW. The Hunter, The Living Outback and Capital Country were among the regions which had above average annual percentage growth while guest nights fell in just under half of the regions with the Northern Rivers Tropical NSW recording the largest percentage decline.

Guest Nights Of Accommodation – June Quarter 2010

Tourist Region	Total For The Quarter	4 Quarter Percentage Annual Change
Sydney	3,612,568	5.6%
Central Coast	156,943	7.1%
Blue Mountains	108,422	-1.4%
Hunter	392,823	8.8%
North Coast	540,869	-3.3%
Northern Rivers Tropical NSW	307,411	-4.1%
Illawarra	120,806	-0.8%
South Coast	202,003	-3.7%
Snowy Mountains	113,565	-0.3%
Capital Country	196,183	5.4%
Explorer Country	368,778	2.8%
New England North West	252,866	2.7%
The Living Outback	131,824	8.3%
Murray	255,302	0.4%
Riverina	184,617	-0.8%
New South Wales	6,944,980	3.2%

Note: The data are not adjusted for seasonal fluctuations.

Source: ABS Survey Of Tourist Accommodation Establishments with at least 5 Rooms.

Definitions of Tourist Regions

Sydney	All of Sydney Statistical Division except the Central Coast and Blue Mountains.
Blue Mountains	Covers the Blue Mountains, Lithgow and Oberon LGAs.
Hunter	Covers the Hunter Statistical Division excluding Great Lakes and Port Stephens LGAs.
North Coast	Covers LGAs along the coast from Port Stephens LGA to Coffs Harbour LGA.
Northern Rivers Tropical NSW	Covers the Ballina, Byron, Clarence Valley, Kyogle, Lismore, Richmond Valley and Tweed LGAs.
Illawarra	Covers the Wollongong, Shellharbour and Kiama LGAs. (i.e. Illawarra Statistical Division excluding the Shoalhaven and Wingecarribee LGAs).
South Coast	Covers the Bega Valley, Eurobodalla and Shoalhaven LGAs.
Snowy Mountains	Covers the Bombala, Cooma-Monaro, Snowy River, Tumbarumba and Tumut LGAs.
Capital Country	Covers the Boorowa, Goulburn-Mulwaree, Harden, Palerang, Queanbeyan, Upper Lachlan, Wingecarribee, Yass Valley and Young LGAs.
Explorer Country	Covers the Bathurst Regional, Bland, Blayney, Cabonne, Coonamble, Cowra, Dubbo, Forbes, Gilgandra, Lachlan, Mid-Western Regional, Orange, Parkes, Warrumbungle, Warren, Weddin and Wellington LGAs.
New England North West	Covers the Armidale-Dumaresq, Glenn Innes Severn, Gunnedah, Guyra, Gwydir, Inverell, Liverpool Plains, Moree Plains, Narrabri, Tamworth Regional, Tenterfield, Uralla and Walcha LGAs.
The Living Outback	Covers the Balranald, Bogan, Bourke, Brewarrina, Broken Hill, Central Darling, Cobar, Walgett and Wentworth LGAs plus Incorporated Far West.
Murray	Covers the Murray Statistical Division area excluding the Tumbarumba, Balranald and Wentworth LGAs.
Riverina	Covers the Murrumbidgee Statistical Division excluding the Tumut LGA.

Selected major projects

Media reports of selected recent and proposed major developments are listed below. The list is not exhaustive.

NSW

- Bunnings plans to open 15 new warehouses and three additional stores in NSW over the next three years, supporting about 3,900 construction jobs and 2,700 retail jobs, as well as more than \$600 million in investment. Three new stores are under construction at Seven Hills (scheduled to open in October 2010), Port Stephens (December 2010) and Chatswood (February 2011). Sites have been identified for 12 new stores (subject to relevant approvals) at Alexandria, Balgowlah, Batemans Bay, Castle Hill, West Gosford, Greenacre, Rouse Hill, Tamworth, Marsden Park, Wallsend, Smithfield and East Gardens. Three further sites have been identified - an existing Lithgow business has been secured and plans for trade centres at St Peters and Cromer are underway. The Alexandria Bunnings Warehouse, which was approved in July 2010, will create more than 345 jobs during construction and 255 permanent jobs once completed. It will be Australia's largest home improvement and outdoor living centre with construction scheduled to start by June 2011 and the store to open in mid-2012. (*Premier of NSW News Release 27-9-10, Australian Financial Review 28-9-10*)

Sydney

- The NSW Government has granted approval for an \$89 million tourist and residential development on a site including the former Hakoah Club at **Bondi Beach**. Almost 200 jobs would be created, including 115 in tourism. The project includes a 113-room serviced apartment hotel, 44 residential apartments, and retail and recreation facilities including a restaurant, cafe, bar, gym and swimming pool. (*NSW Minister for Planning Media Release 27-8-10, Sydney Morning Herald 6-9-10*)
- Mirvac has gained NSW Government approval of a concept plan for a \$182 million employment development at **Hoxton Park**. The proposal for warehouses, distribution centres and light industry is expected to create 1,400 construction jobs and 1,135 operational jobs when completed. Mirvac has also gained approval to construct a Big W and a Dick Smith warehouse on the site. Construction of these projects will start immediately and is expected to be completed by March 2012. (*Australian Financial Review 24-7-10, Street Corner South-West Sydney online 28-7-10*)

Central Coast

- In July Pacific Beverages opened its \$120 million Bluetongue Brewery at **Warnervale**. The brewery is the second largest in NSW with a capacity of 50 million litres, with potential to increase capacity to 150 million litres over time. More than 100 people will work at the brewery when it is fully operational. (*Australian Financial Review 30-7-10, Bluetongue Brewery News item 9-9-09*)

Hunter

- The Newcastle University is to open the **Newcastle** Institute for Energy and Resources (NIER) on the former BHP Billiton Newcastle Technology Centre site to address national priorities in sustainability and energy. The \$40 million project comprised \$30 million from the Australian Government Education Investment Fund and \$10 million from the university. Over 260 jobs will be created during the refurbishment of the existing centre and the construction of a new specialist facility. Once completed the institute will support up to 300 researchers. (*The University of Newcastle News item 25-6-10, Sustainability Matters website news 28-6-10*)
- The NSW Government has approved a \$785 million expansion of the Mount Arthur coal mining complex near **Muswellbrook** that will create hundreds of new jobs. As a result of the approval, the operation's rate of extraction will increase from 28 to 36 million tonnes per year. The project would run until 2022, operating 24 hours a day. The expansion is expected to boost employment at the complex by 1,600 from 960 to 2,600 workers at peak production. (*NSW Minister for Planning Media Release 24-9-10, Newcastle Herald 28-9-10*)

Illawarra

- The Chifley **Wollongong** hotel opened in September. The 168 room hotel employs around 40 staff. (*Illawarra Mercury 14-8-10, traveltalknow.com 6-9-10*)
- The University of **Wollongong's** Innovation Campus will be the site of a new \$25 million facility, called the Retrofitting for Resilient and Sustainable Buildings (RRSB). Sixty five jobs will be created constructing the facility. Once completed, it will attract 30 additional research students, 30 undergraduate students and 75 TAFE students a year in the area of sustainable construction. RRSB will deliver evidence-based practice in sustainable building technologies and design for southern hemisphere environments. (*Innovation Campus News Item 17-6-10, Wollongong Advertiser 16-6-10*)

South Eastern

- Approval has been given by the NSW Government for a \$700 million, 270 megawatt wind farm near **Nimmitabel** (south of Cooma). The project will create 200 construction jobs and 15 ongoing positions. Boco Rock Wind Farm will construct the wind farm which is expected to commence operations in 2012. The facility will comprise over 100 turbines with the potential to power up to 120,000 homes each year. (*NSW Minister for Planning Media Release 9-8-10, smh.com.au 10-8-10*)
- The NSW Government has approved the development application for a timber mill upgrade at **Bombala**. The \$65 million project is expected to secure hundreds of jobs. Approval has also been given to increase the mill's softwood log input capacity from 106,000 to 400,000 tonnes a year. The project involves relocating or replacing most of the mill's existing infrastructure over a transition period of about four years. It also involves construction of a new mill and timber treatment plant and associated infrastructure such as additional boilers and kilns and a new wastewater management system. (*Bombala Times 15-9-10, ABC News 9-9-10*)

North Coast

- Main building works on the Pacific Highway **Kempsey** bypass started in June 2010 and it is expected the bypass will be open to traffic by mid 2014. The Australian Government is providing \$618 million for the project which involves building 14 kilometres of four lane divided highway to bypass Kempsey and Frederickton. In November 2009 the NSW Roads and Traffic Authority (RTA) announced the works would be carried out by an alliance including Leighton Contractors, AECOM and Coffey Geotechnics. (*Macleay Argus 14-5-10; RTA website, downloaded 7-10-10*)

Northern NSW

- The Moolarben Coal Mine at Ulan, about 40 kilometres north-east of **Mudgee**, was officially opened in August. It began production in May and will employ 320 workers when it reaches full output. The mine is expected to have a life of 20 years and will create 1,400 indirect jobs over its life. Stage two of the mine will include an extension of the open cut and an underground mine. The mine is a joint venture between Yancoal Australia, Soljitz (Japan) and a Korean consortium. (*The Weekly (Mudgee) 4-8-10, Mudgee Guardian 4-8-10*)
- The **Moree** Hot Artesian Pool Complex is to undergo a \$6.5 million upgrade which is expected to support 100 jobs during construction and another 20 jobs over the longer term. The Australian Government will provide \$3 million for the redevelopment which includes an upgrade of the swimming pool to FINA Olympic standard, installation of a fitness area, construction of an interpretive/cultural centre and redevelopment of the children's fun park and the hydrotherapy pools. (*Australian Government Minister for Infrastructure, Transport, Regional Development and Local Government Media Release 18-5-10, Moree Plains Shire Council News 26-5-10*)

Central West

- The Australian Government and Orange City Council are to jointly fund the \$7.2 million **Orange** Indoor Aquatic Centre. Around 70 jobs will be created during construction as well as 12 permanent jobs once the building is complete towards the end of 2011. The project will redevelop the existing aquatic centre to incorporate a new eight-lane, 25-metre heated indoor pool and enclosure of the existing toddler's pool. It will also include tiered seating for 200 and a new crèche, café, kiosk, change rooms, entrance and on-site parking. (*Australian Government Minister for Infrastructure, Transport, Regional Development and Local Government Media Release 20-5-10, Central Western Daily 5-6-10*)

Far West

- The Australian Government is investing \$565 million in the rail infrastructure of Far Western NSW. The Australian Rail Track Corporation (ARTC) is to re-rail the lines between **Broken Hill** and Whyalla and Broken Hill and **Parkes**, an upgrade which will allow both lines to be used by heavier trains. This \$312 million project will support 275 jobs and take approximately 25 months to complete. Replacing the existing wooden sleepers on the line between Broken Hill and Parkes with one million new concrete sleepers will improve its capacity as well as reducing transit times and the need for

temporary speed restrictions during summer. This \$253 million project will support up to 370 jobs and take approximately 13 months to complete. Work on both projects is expected to begin later this year. (*Australian Government Minister for Infrastructure, Transport, Regional Development and Local Government Media Release 20-5-10, Barrier Daily Truth 21-5-10*)

Riverina

- A \$53.5 million development on **Albury**'s Volt Lane site will include two office buildings and a five level car park with almost 500 spaces. According to the developer, Le Hunte Properties, the development will require 30 sub-contracting building construction companies and generate 300 to 400 jobs. One of the buildings will house 600 workers from the Australian Taxation Office (currently housed elsewhere in Albury) while the shops, restaurant and cafe is expected to create 90 jobs. Construction is expected to commence in January 2011 with the taxation office expected to be completed in late 2012. A regional planning panel will assess the proposal. (*Border Mail 25-8-10, Albury City Council News item 4-5-10*)
- Eighty construction jobs will be created when a \$57 million flooding project starts in the Koondrook and Perricoota State Forests (near **Deniliquin**). Construction by Fulton Hogan Construction is to begin in September and is expected to be completed in June 2011. The project will allow for the flooding of forests through building channels and fishways, and is designed to maintain forest health. (*State Water Media release (2-9-10, Deniliquin Pastoral Times 27-8-10)*)

ACT

- The Australian National University (ANU) will build 1,023 new accommodation units on and adjacent to the **Canberra** campus over the next two years. The Australian and ACT Governments are making funding contributions towards the \$200 million project which will provide accommodation at 20 per cent below the prevailing market rate for low income earners. (*ANU Media Release 15-6-10, Daily Advertiser 16-6-10*)